



SEND Newsletter

Issue 06 November 2024

Mrs F Wadsley, Headteacher

0115 915 0500 | [Email the office](#) | [Website](#)

Welcome to our SEND newsletter

Welcome to Our Lady's latest SEND news letter, designed to share updates and information regarding special educational needs and disability, both at our school and in the community.

Should you require any further information, or if you would like an appointment to discuss your child, please contact the school office and I will be happy to help.

Mrs Thompson
SENCO

SEND Frequently Asked Questions

What is the Local Offer?

Since September 2014, every local authority has been required to publish information about services available in their area for children and young people from birth to 25 who have Special Educational Needs or Disabilities, and also services outside of the area which they expect children and young people from their area will use. This is known as the "Local Offer".

Support offered includes:


Education
Health
Help and advice
Leisure
Financial advice
Preparing for adulthood
Social care
Travel and transport



nottshelpyourself.org.uk

World Mental Health Day

Our school community came together on Thursday October 10th to celebrate World Mental Health day!



The Colour Monster

ANNA LENAS

Each class was allocated a colour representing an emotion. During morning lessons, we investigated what causes us to feel the emotion, before learning techniques to help us



The theme of the afternoon was 'connect'. We enjoyed moving around different classrooms experiencing a range of activities which allowed us to connect with children in other year groups. A great day, increasing awareness of mental health and wellbeing, was enjoyed by all!

Meet our Wellbeing Warriors



Six of our children have been selected to create a new leadership team in school, called the 'Wellbeing Warriors!'.

Each child was chosen because staff feel they can offer the skills and qualities needed to promote happiness, positive thinking and wellbeing in our school community. Their first task was to help Mrs Thompson plan our World Mental Health Day celebrations. They did an amazing job and we look forward to working together on future projects. Well done to all the team!

Y1 – Nikola Malysza
Y2 – Rohan Gibbons
Y3 – Rueben Morley
Y4 – Novia Shah-Dexter
Y5 – Sarah Mathew
Y6 – Enya-Rois Broomhead

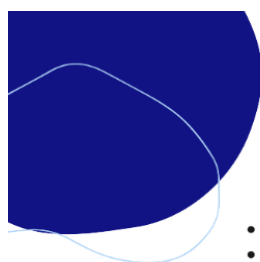


SEND Newsletter

Winter Community Activities

Parent/Carer Drop In Sessions

Please see below for a flyer advertising free drop in sessions offered by the SEND team at Nottingham City Council. These sessions provide parents of children with ASD, or other additional needs, an opportunity to connect with other parents and gain support from SEND staff who lead the sessions.



PARENT/CARER DROP IN SESSIONS

COFFEE & CHAT

- 25th September
- 17th October
- 28th November
- 19th December

10:00 - 12:00pm

At Homemade Cafe

Forest Recreation Ground,
Mansfield Road,
Nottingham
NG5 2BU

This is a peer support session where you can meet with other parents and carers to gain sign posting advice and support

FOR PARENTS/CARERS OF CHILDREN/YOUNG PEOPLE UP TO THE AGE OF 25 WITH AUTISM AND/OR A LEARNING DISABILITY



@keyworking.service



@keyworkingservice



keyworking.service@nottinghamcity.gov.uk



Planet Bounce SEND Sessions

Planet Bounce offer relaxed sessions for children who would benefit from a more calming, quieter atmosphere. Sessions are offered on selected Sunday mornings 9am-10am and Wednesday evenings 5pm-6pm. The lighting and volume of music are adjusted and the sessions run with a significantly lower amount of participants. Contact details to book:

Web: www.planetbounceinflatablepark.com

Telephone: 0115 9881 745



Autism Friendly Santa Experience

Matlock Farm Park are proud to be offering an Autism Friendly Santa Experience this Christmas. Sessions will be held on Sunday 24th November and Saturday 30th November. Benefits for child with additional needs include:

- Use of a sensory transition room
- Support from Autism trained staff
- An opportunity to meet Santa outdoors, or in a location the child is comfortable with
- A meet and greet service
- A chance to meet Santa during less busy periods

Pre-booking is essential and tickets are anticipated to sell out quickly.

Visit www.matlockfarmpark or telephone: 01246 590 200 for further details



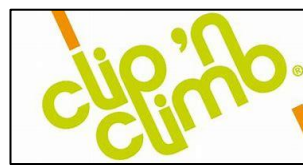
Clip n Climb for children with Additional Needs

Clip N Climb Nottingham, have combined Family & Toddler sessions with SEN sessions, as they both are the same structure with lower capacity, every Saturday and Sunday morning. These sessions are tailor made to help support and encourage participants.

Contact details for further information and bookings:

Web: www.clipnclimbnottingham.co.uk

Telephone: 0115 8227120



A final thought....

EVERY CHILD is a
different KIND of flower
AND all TOGETHER
make THIS WORLD a
Beautiful garden.

